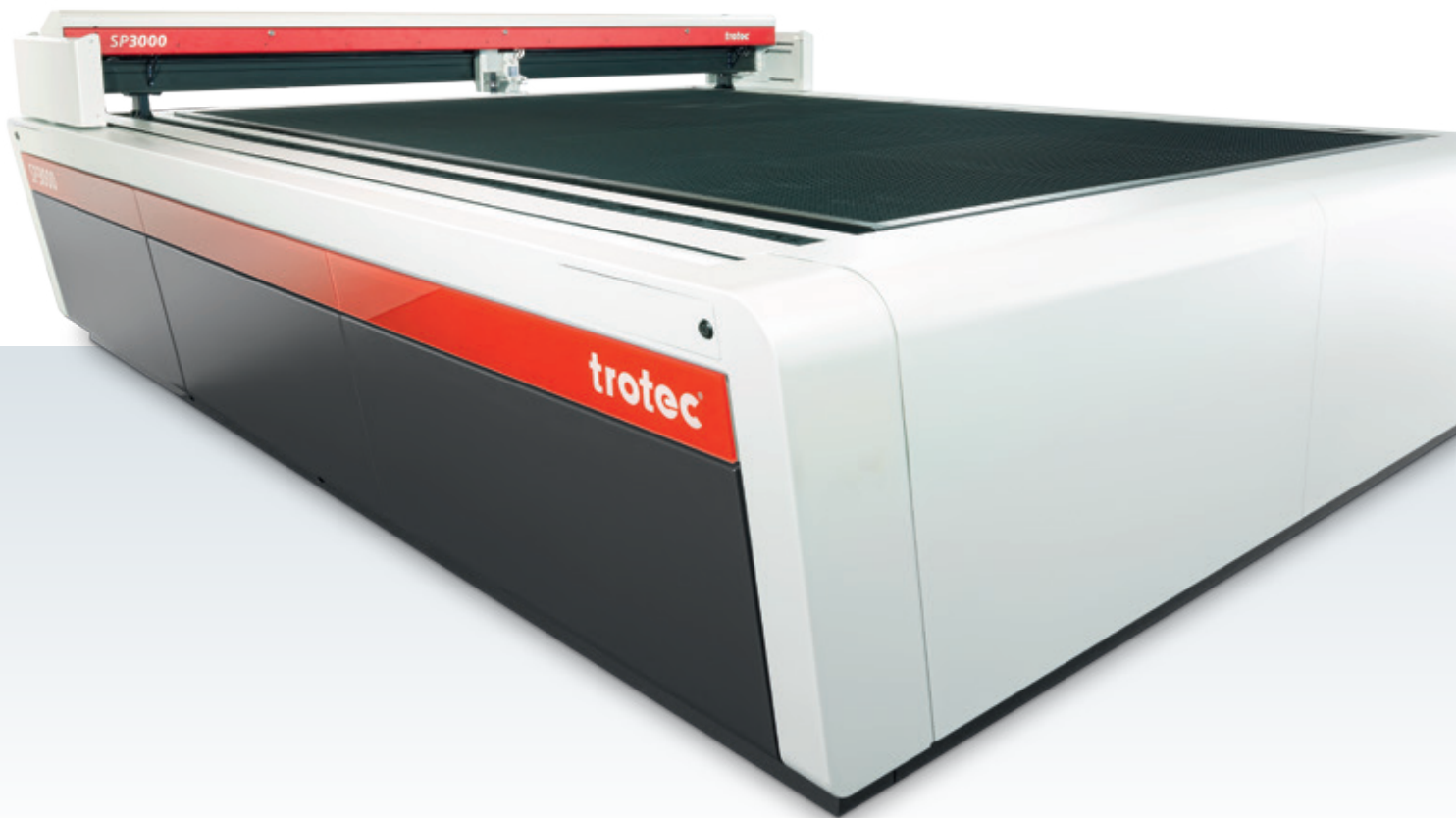


**trotec**<sup>®</sup>  
*laser. marking cutting engraving*



**Large Format Laser Cutter**

**→ SP3000**



2.210 x 3.210 mm working area  
For industrial use and 24/7 operation  
Four sides access

# Leading Large Format → SP3000

The laser cutter has a working area of 2.2 x 3.2 meters and is suited for cutting large format materials like acrylics, wood, textiles, cardboard and more. An innovative drive technology and its rigid design, make the SP3000 ready for 24/7 production. The four sides access allows unrestricted unloading and loading even while the machine is cutting.



## Outstanding Working Area

The working area of 2.210 x 3.210 mm of the SP3000 is designed for large format materials. It is easy to access from all four sides. The loading area is 2.500 mm wide, open at the front and the rear. This setup will drive your productivity.

## High Speed Cutting at Highest Quality

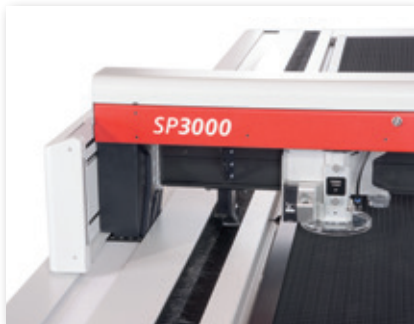
With speeds up to 2 m/sec and 1g acceleration, the SP3000 delivers cutting quality beyond compare. The innovative drive technology, the precise mechanical guidance system and the superior mechanical concept state the engineering excellence made in Austria.

## JobControl® Laser Software

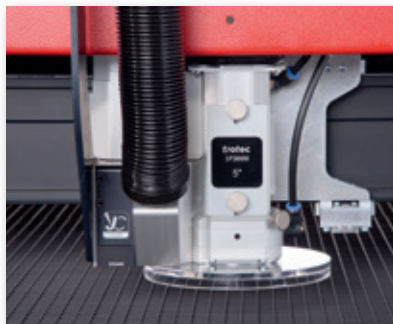
The Trotec laser software supports you perfectly in handling your cutting and engraving jobs. A variety of useful and intelligent features make your work easier: eg. bi-directional communication, Job Time Calculator or the iOS App Trotec Laser Remote.

## Fully Closed Beam Path for 24/7 Operation

The laser class 4 laser can be operated like a laser class 2 system in normal operation mode. The laser beam is covered over its complete path. An active laser deflector shield on the laser head completes the safety concept. No additional safety measures are necessary.



InPack-Technology™



Powerful working head



Interlocked safety bumpers with light barriers

## InPack Technology™

For a high-quality cutting result the perfect function of the axis is most important. The axis is protected against dust by the InPack Technology™. All optics are air-flushed with clean compressed air. The optics are kept free from dust that is produced during cutting. This is providing a maintenance-free operation and a long life of the high-quality components.

## JobControl® Vision

Achieve accurate results when cutting printed materials. Registration marks are printed along the image. The camera – which is attached to the working head – “reads” the registration marks prior to the cutting process and compares the “read” positions on the printed design and the target positions in the original cut file. Any deviations are adjusted automatically.

## Travelling Exhaust

An exhaust is mounted directly on the working head and removes dust and smoke from the material surface during processing. This dramatically improves cutting and engraving quality.

## Operating Console

An ergonomic and functional operating console supports the work with the SP3000. It serves as control unit of the machine: Organize your PC and screen, store tools in the drawer. The operator controls the SP3000 with an integrated keypad.

## → Multifunctional Table Concept

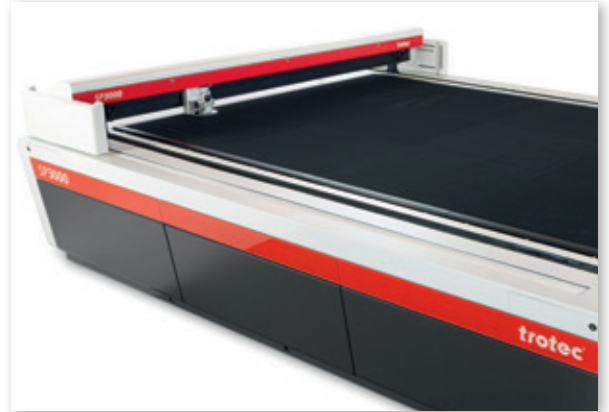
### The right working table for every application

On its 2.210 x 3.210 mm in working area, the laser cutter provides plenty space for most standard sheet size materials in use today. For the SP3000 Trotec has developed a unique, multifunctional table concept. Depending on the application the ideal table can be selected and changed easily and quickly.



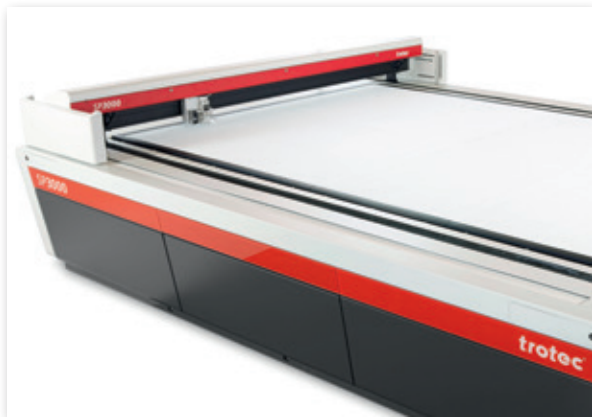
#### Slat Cutting Table

The cutting table with aluminum slats is mainly used for cutting thicker materials (up to 8 mm thickness) and for parts wider than 100 mm. Acrylics can be cut with no reflections by exchanging the aluminum with acrylic slats. One can reduce the number of supporting points by removing slats individually, depending on the job.



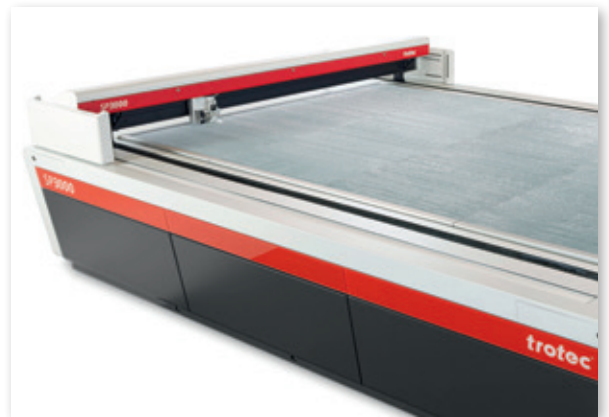
#### Aluminum Cutting Grid Table

This robust, universal cutting table is characterized by extremely stable combs and a long lifetime. It is particularly suitable for cutting tasks with parts smaller than 100 mm, as these remain in a flat position after the cut. Compared to the cutting table the aluminum cutting grid table has more supporting points.



#### Acrylic Cutting Grid Table

The universal cutting table for the reflection-free cutting of thin acrylics with a thickness up to 8 mm. Like with the aluminum cutting grid table parts smaller than 100 mm remain in a flat position after the cut.



#### Honeycomb Cutting Table

This processing table is especially suitable for applications that require minimal back reflections and optimum flatness of the material, like for example cutting films.

---

#### Digital Table Exhaust

The working area is divided into four quadrants. The extraction can be activated independently within these four segments. There is no need for covering the working area manually.

## → Technical Data: SP3000

<b>Dimensions (w x d x h)</b>	3.076 x 3.914 x 1.230 mm (121 x 154 x 49 in)
<b>Working area</b>	2.210 x 3.210 mm (87 x 126 in)
<b>Loading area</b>	2.500 x ∞ mm (98 x ∞ in)
<b>Tables</b>	Slat Cutting Table, Aluminum Cutting Grid Table, Acrylic Cutting Grid Table, Honeycomb Cutting Table
<b>Lenses</b>	2,5", 3,75", 5,0"
<b>Weight</b>	1600 kg
<b>Power consumption and voltage</b>	3 x 230 volt, 8,4 KW (400 watts model)
<b>Max. processing speed</b>	2 m/sec; acceleration 1g
<b>Laser power levels</b>	Sealed-off CO <sub>2</sub> Laser with 60 – 400 watts, water cooled
<b>Laser class</b>	Fully enclosed beam path laser class 4 laser; system can be operated as laser class 2 in standard operation mode
<b>Mechanical design</b>	Enclosed chassis with double safety interlock system, maintenance-free, brushless DC servo motors; CE compliant
<b>Working Head</b>	Software controlled z-axis, Travelling exhaust, JobControl® Vision, active laser deflector shield, lens protection window, Sonar Technology™

### → Trotec laser – developed and built in Austria

Send us your materials and samples: Our application engineers support you in looking for the optimal laser system for you.



SP3000 with operating console and travelling exhaust



Fast switching of lenses



Laser cutting of large format materials

104981



Printed on FSC certified paper

[www.troteclaser.com](http://www.troteclaser.com)

Trotec Laser GmbH  
 Linzer Str. 156, A-4600 Wels, [trotec@troteclaser.com](mailto:trotec@troteclaser.com)  
 Tel. +43 / 72 42 / 239-7777, Fax +43 / 72 42 / 239-7380

[www.facebook.com/trotec](https://www.facebook.com/trotec)

[twitter.com/TrotecLaser](https://twitter.com/TrotecLaser)

