

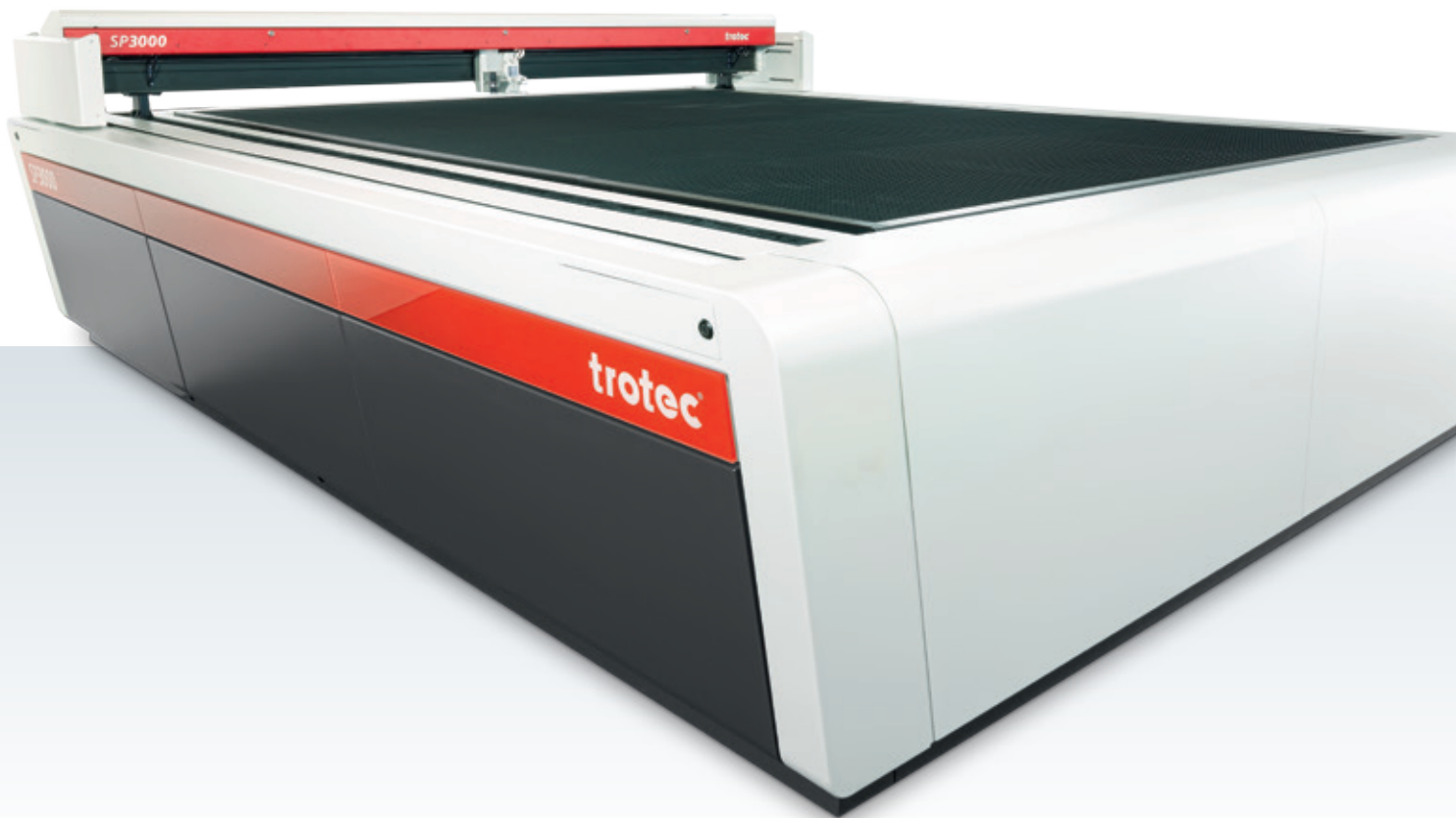
trotec[®]

laser. marking cutting engraving

setting
new
standards

Leading Large Format Laser Cutting

→ **SP Series**



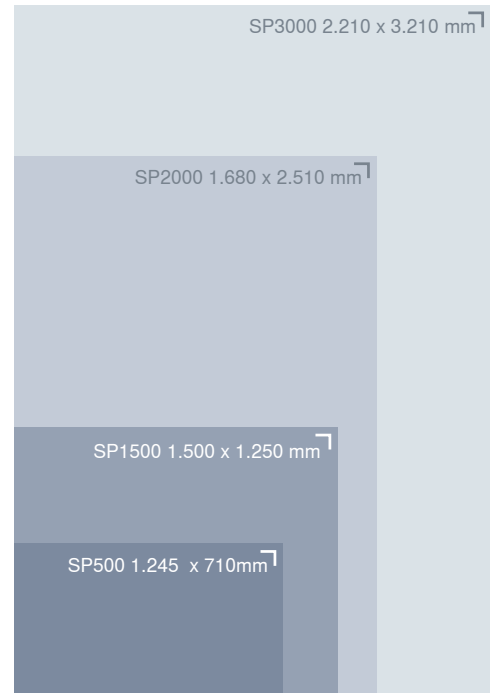
Productive and reliable
For industrial use and 24/7 operation
Working area up to 2.210 x 3.210 mm

→ SP Series Leading Large Format Laser Cutter

The SP Series is the right choice for large format CO₂ laser cutting systems. The highly efficient flatbed laser plotters are ideal for demanding large format cutting applications in acrylic, paper, cardboard, plastics, wood, textiles and many more.

The high-quality, perfectly matched components ensure an extremely long lifetime and a precise cut. For the SP series laser cutter Trotec developed a unique, multifunctional table concept. Depending on the application the ideal table can be selected and changed easily and quickly.

The working areas of SP laser cutters provide enough space for all standard sheet sizes in use today.



SP500

- 1.245 x 710 mm working area
- up to 200 watts laser power



SP1500

- 1.500 x 1.250 mm working area
- up to 400 watts laser power

→ SP2000 and SP3000



Four Sides Access

The working area of 2.210 x 3.210 mm of the SP3000 is designed for large format materials. It is easy to access from all four sides. The loading area is 2.500 wide, open at the front and the rear. The open design allows unloading and loading from all four sides even during processing.



Laser Safety Class 2

The laser systems have laser safety class 2. This means that no additional safety measures are necessary. The laser beam is covered over its complete path. An active laser deflector shield on the laser head completes the safety concept.



Digital Table Exhaust

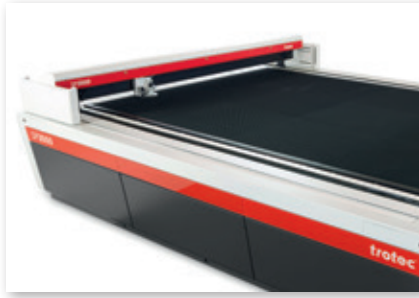
The working area is divided into four (SP3000) or two (SP2000) sectors. The extraction can be activated independently within these segments. There is no need for covering the inactive sections manually.

→ **Multifunctional Table Concept**
The right working table for every application



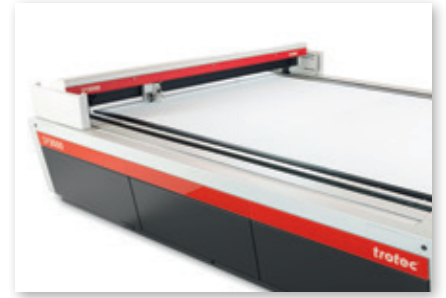
Slat Cutting Table

The cutting table with aluminum slats is mainly used for cutting thicker materials (up to 25 mm thickness) and for parts wider than 100 mm. Acrylics can be cut with no reflections by exchanging the aluminum with acrylic slats. One can reduce the number of supporting points by removing slats individually, depending on the job.



Aluminum Cutting Grid Table

This robust, universal cutting table is characterized by extremely stable combs and a long lifetime. It is particularly suitable for cutting tasks with parts smaller than 100 mm, as these remain in a flat position after the cut. Compared to the cutting table the aluminum cutting grid table has more supporting points.



Acrylic Cutting Grid Table

The universal cutting table is ideal for the reflection-free cutting of thin acrylics with a thickness up to 8 mm. Like with the aluminum cutting grid table parts smaller than 100 mm remain in a flat position after the cut.



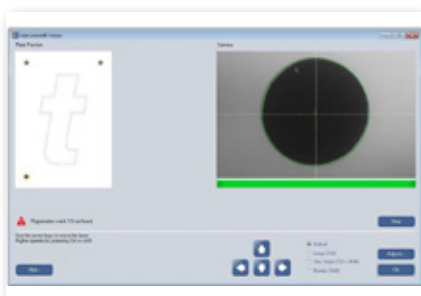
SP2000

- 1.680 x 2.510 mm working area
- up to 400 watts laser power



SP3000

- 2.210 x 3.210 mm working area
- up to 400 watts laser power



JobControl® Laser Software

The Trotec laser software supports you perfectly in handling your cutting and engraving jobs. A variety of useful and intelligent features make your work easier: eg. bi-directional communication, Job Time Calculator or JobControl® Vision: Achieve accurate results with JobControl® Vision when cutting printed materials.



InPack Technology™

For a high-quality cutting result the perfect function of the axes is most important. All axes are protected against dust by our InPack Technology™. All optics are air-flushed with clean compressed air. The optics are kept free from dust that is produced during cutting. This is providing a maintenance-free operation and a long life of the high-quality components.



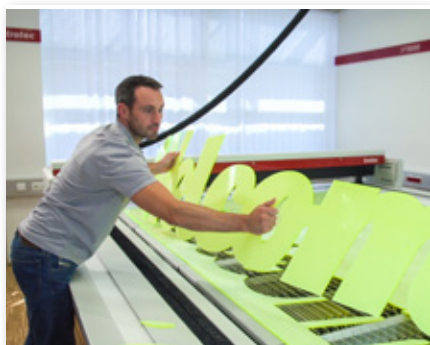
Travelling Exhaust

An exhaust is mounted directly on the working head and removes dust and smoke from the material surface during processing. This dramatically improves cutting and engraving quality.

→ Technical Data

	SP500	SP1500	SP2000	SP3000
Dimension (w x d x h)	1.920 x 1.240 x 1.140 mm	2.850 x 2.200 x 1.300 mm	2.519 x 3.214 x 1.230 mm	3.076 x 3.914 x 1.230 mm
Working area	1.245 x 710 mm	1.500 x 1.250 mm	1.680 x 2.510 mm	2.210 x 3.210mm
Loading Area	1.400 x ∞ mm	1.500 x 1.250 mm	1.950 x ∞ mm	2.500 x ∞ mm
Max. height of workpiece	112 mm, without processing table: 300 mm	185 mm	50 mm	50 mm
Max. processing speed/ acceleration	2.54 m/sec. 2 g	1.65 m/sec. 1 g	2 m/sec. 1 g	2 m/sec. 1 g
Laser power	Sealed off CO ₂ laser 40 – 200 watts	Sealed off CO ₂ laser 40 – 200 watts	Sealed off CO ₂ laser 60 – 400 watts	Sealed off CO ₂ laser 60 – 400 watts
Laser Class	Laser safety class 2 (laser class 4 with pass-through option)	Laser safety class 2	Laser safety class 2	Laser safety class 2
Four sides access			•	•
Digital table exhaust			•	•
JobControl® Vision	•	•	•	•
Software-controlled z-axis	•		•	•
Sonar Technology™			•	•
Pass-through	•		•	•
Multifunctional table concept	•	•	•	•

→ **Trotec laser – developed and built in Austria**
Send us your materials and samples: Our application engineers support you in looking for the optimal laser system for you.



Laser cutting of large format materials



Unloading and loading from all four sides even during processing



Powerful laser cutting and engraving with one machine

www.troteclaser.com

Trotec Laser GmbH
Linzer Str. 156, A-4600 Wels, trotec@troteclaser.com
Tel. +43 / 72 42 / 239-7777, Fax +43 / 72 42 / 239-7380

www.facebook.com/trotec

twitter.com/TrotecLaser

