



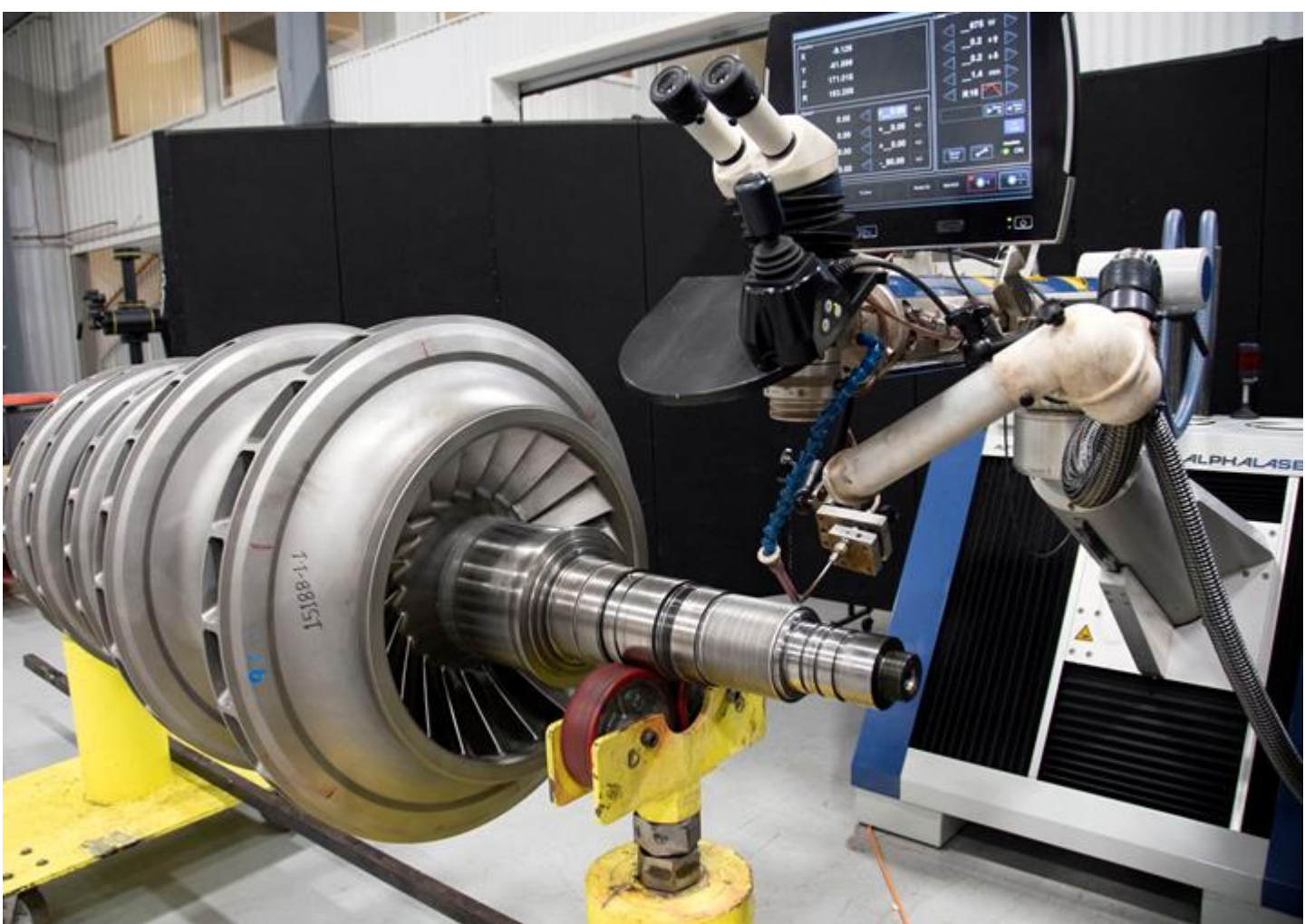
## **LASER SOLUTIONS FOR INDUSTRIES**



**AEROSPACE  
DEFENSE  
ENERGY  
PRECISION ENGINEERING**

[www.lasertech.vn](http://www.lasertech.vn)

# LASER SOLUTIONS FOR MATERIAL PROCESSING



- LASER WELDING
- LASER CLADDING
- LASER HARDENING
- 3D PRINTER

- LASER CUTTING
- LASER ENGRAVING
- LASER DRILLING
- LASER CLEANING

## **LASERTECH CO. LTD**

Nguyen Khe village, Phuc Thinh commune, Hanoi, Vietnam

Hotline: +84912 425 348

Website: [www.lasertech.vn](http://www.lasertech.vn)

Email: [info@lasertech.vn](mailto:info@lasertech.vn)







# LASER SYSTEMS FOR METAL WORKING



ALPHA LASER GMBH, GERMANY

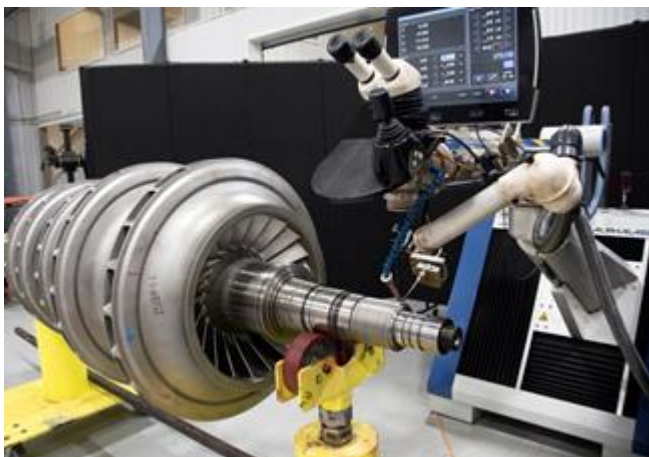


## LASER WELDING, CLADDING, HARDENING 3D PRINTING

- Laser Nd:YAG & Laser Fiber, PULSE / CW
- System closed / open, stationary / mobile

## PRECISE LASER WELDING OF ALL METAL ALLOYS, SIZES AND WEIGHTS

- Laser power from 100 W to 20 kW, 12 kW peak pulse power
- From manual to fully automatically 4 axes, robot >6 axes
- From welding spot 100  $\mu\text{m}$  to aerospace engine, turbine shaft, casing, mold & die...



Pulse laser welding turbine shaft repair



Pulse laser welding mold repair



## LASER ENGRAVING AND CUTTING



### METAL ENGRAVING, NON-METAL CUTTING

- Laser CO2 from 30 W – 400 W
- Laser Fiber from 20 W – 100 W
- Gantry size from 450 x 350 mm to 2.210 x 3.210 mm
- Galvo working size from 300 x 300 mm to 1.300 x 450 mm
- Stand alone to fully automatically working



TROTEC LASER GMBH, AUSTRIA



Marking on stainless steel by Mopa Laser



Marking on anodized aluminum



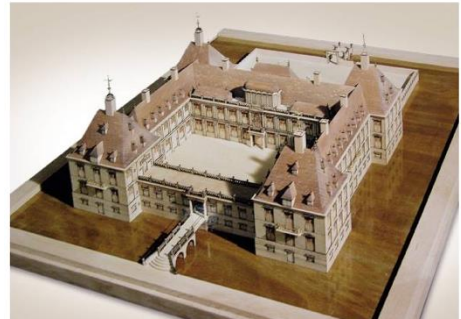
Marking with focus shift



2D code marking on steel part



Marking sign on ABS plastics



Architecture model making with woods

### LASERTECH CO. LTD

Nguyen Khe village, Phuc Thinh commune, Hanoi, Vietnam

Hotline: +84912 425 348

Website: [www.lasertech.vn](http://www.lasertech.vn)

Email: [info@lasertech.vn](mailto:info@lasertech.vn)





## LASER WELDING SERVICE FOR FABRICATION AND REPAIR

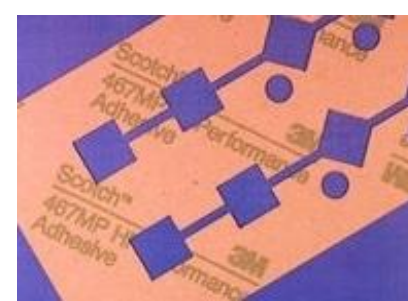
- Pulse laser welding repair of shafts, blades, casing, impellers, pumps & valves for Power generation, Petrochemical, Aerospace, Defense, Marine, Automotive ...
- Pulse laser welding service for Mold & Die repair
- Laser welding for production of sensors, electronic devices, precise engineering
- Lasertech or on-site with international standards
- More than 15 years experience in laser welding technology
- Laser welding system: ALPHA ALFLAK 1200F  
Laser in 2 mode: Pulse or Continuous wave  
Peak pulse power: 12 kW  
CNC 4 axes: 340 x 320 x 420 mm x R  
Maximum wire diameter: 2.0 mm
- Laser welding on all kind of steels, copper, aluminum, titanium, nickel, cobalt alloys such as Inconel, Stellite, René ...
- Deposition rate 1 m/min with 1.6 mm welding wires
- Crane 20 tons, 10 m x 18 m





# LASER MARKING ON METALS & CUTTING FOR NON-METALS

LASERTECH



- Marking & engraving on all materials
- Color marking on SUS and anodized aluminum
- Marking on plastics ABS, PC
- Marking on laser laminate
- Marking all kind of data
- Marking on flexible quantity at Lasertech workshop

- Laser marking system SpeedMarker 20W MOPA  
Working size 200 x 200 mm  
For all metal and plastic materials
- Laser cutting system Speedy 400 Flexx  
Engraving all metals, cutting non-metals  
Working size 1000 x 610 mm

